

GN 334.1 Tubular oval-cross-section handles

Inclined shanks, zinc alloy and aluminium



HANDLE SHANKS

Die-cast zinc alloy, epoxy resin coating, RAL 9005 black colour, matte finish. Fitted to the tube by means of a screw.

END CAPS

Polyamide based (PA) technopolymer, light grey colour.

STANDARD EXECUTIONS

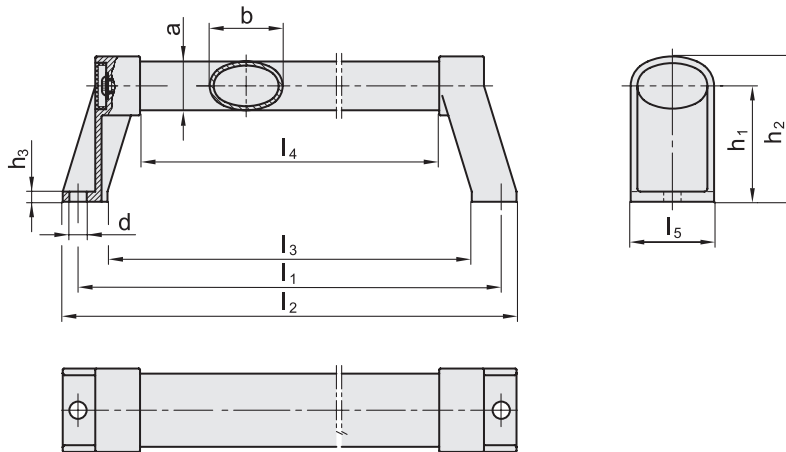
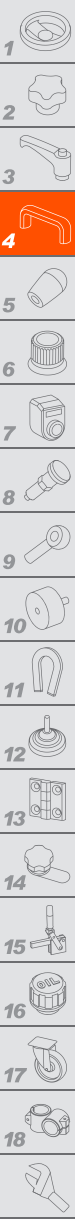
- **GN 334.1-SW:** aluminium tube, epoxy resin coating, RAL 9005 black colour, matte finish.
- **GN 334.1-EL:** anodised aluminium tube, natural colour.

FEATURES AND APPLICATIONS

GN 334.1 handles are characterised by a high stability, being the tube assembled to the side handle shanks by means of two screws. These handles are typically used on turning or rolling doors for machines and equipment.

SPECIAL EXECUTIONS ON REQUEST

- Different lengths.
- Executions with anodised aluminium tube, natural colour and RAL 9006 light-grey side handle shanks (GN 334.1-ES).



Conversion Table	
1 mm = 0.039 inch	
l2	
mm	inch
215	8.46
265	10.43
315	12.40
415	16.34
515	20.27
615	24.21
815	32.09

METRIC

Code	Description	b	l1 ±0.5	d	a	h1	h2	h3	l2	l3	l4	l5	⚖
GN.14962	GN 334.1-36-200-SW	36	200	8.5	24	57	72	5	215	171	139	41	440
GN.14961	GN 334.1-36-200-EL	36	200	8.5	24	57	72	5	215	171	139	41	440
GN.14964	GN 334.1-36-250-SW	36	250	8.5	24	57	72	5	265	221	189	41	470
GN.14963	GN 334.1-36-250-EL	36	250	8.5	24	57	72	5	265	221	189	41	470
GN.14966	GN 334.1-36-300-SW	36	300	8.5	24	57	72	5	315	271	239	41	500
GN.14965	GN 334.1-36-300-EL	36	300	8.5	24	57	72	5	315	271	239	41	500
GN.14968	GN 334.1-36-400-SW	36	400	8.5	24	57	72	5	415	371	339	41	721
GN.14967	GN 334.1-36-400-EL	36	400	8.5	24	57	72	5	415	371	339	41	721
GN.14970	GN 334.1-36-500-SW	36	500	8.5	24	57	72	5	515	471	439	41	799
GN.14969	GN 334.1-36-500-EL	36	500	8.5	24	57	72	5	515	471	439	41	799
GN.14972	GN 334.1-36-600-SW	36	600	8.5	24	57	72	5	615	571	539	41	878
GN.14971	GN 334.1-36-600-EL	36	600	8.5	24	57	72	5	615	571	539	41	878
GN.14974	GN 334.1-36-800-SW	36	800	8.5	24	57	72	5	815	771	739	41	1043
GN.14973	GN 334.1-36-800-EL	36	800	8.5	24	57	72	5	815	771	739	41	1043

Lift & Pull handles